



SELF CLIMBING HYDRAULIC SYSTEMS

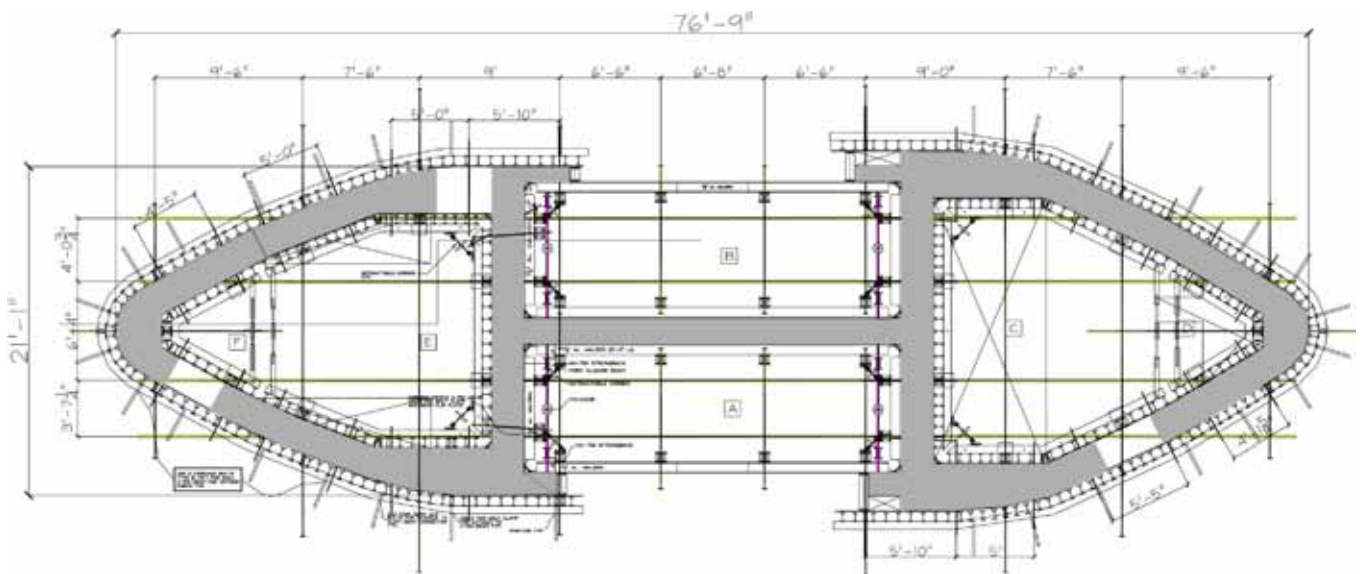
- next generation in concrete forming

SELF CLIMBING HYDRAULIC SYSTEM

SCFA Self Climbing Hydraulic Form was used for construction of an entire core on a 49 story high tower, the tallest tower in Western Canada.

Project: **One Wall Tower**
Hotel & Residential Tower
1001 Hornby Street
Vancouver, B.C.
Canada

Forming Contractor:
Loewen Construction Ltd.

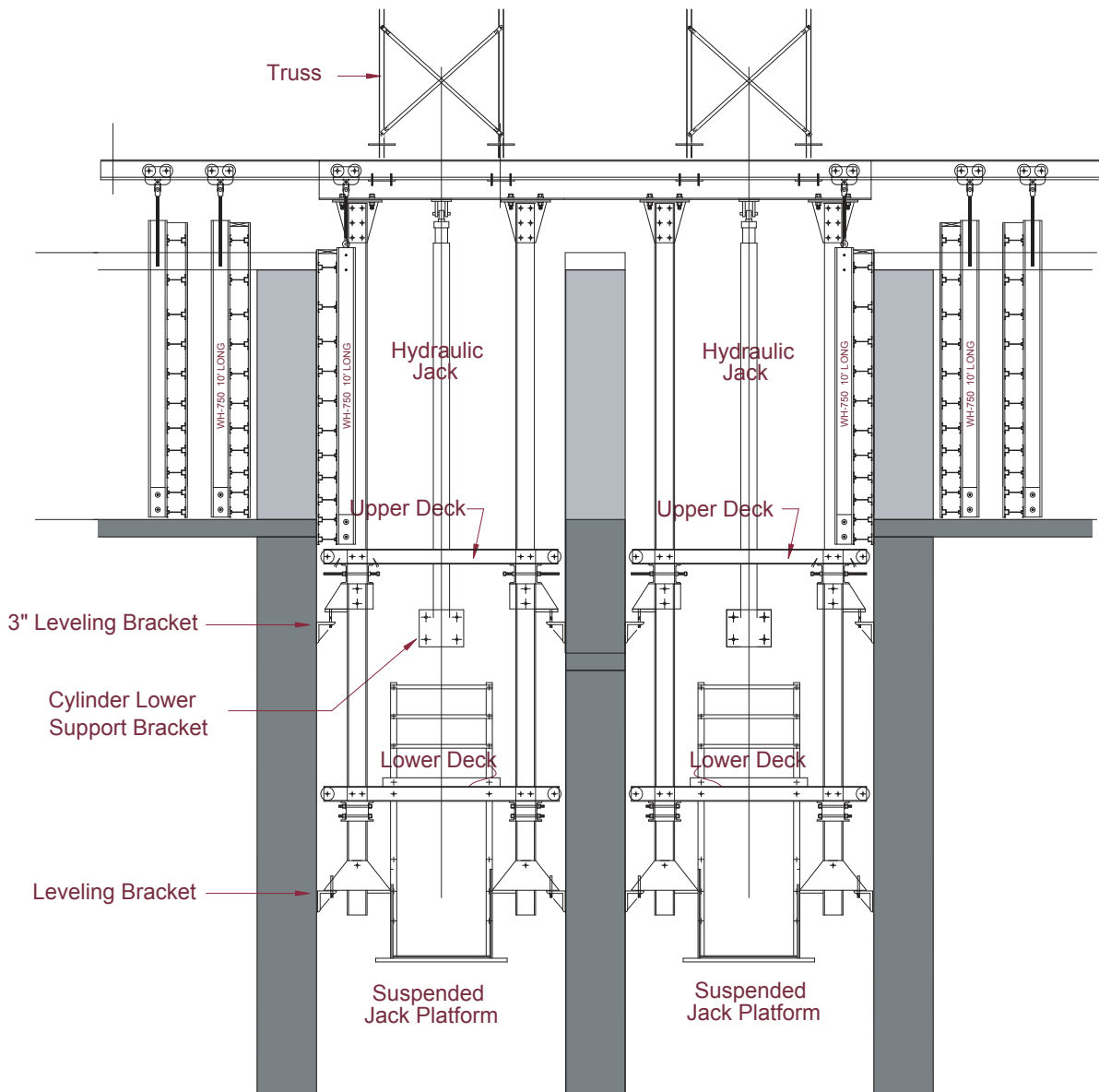


Self Climbing System allowed concrete forming contractor, Loewen Construction Ltd., To pour in one day, floor slab and core wall forms on the same slab and to accomplish a four day cycle per floor.

Four cylinders with a single stroke of up to 12 feet, lift the entire outside and inside 135,000 lb wall form system, 76'-9" long by 21'-0" wide, at the speed of 2 ft/min.



Typical Cross Section



Self Climbing Hydraulic System consists of four hydraulic jacks, form aligner structures, support trusses, secondary support beams and suspended wall forms.



Kelowna Branch

310 Carion Road
Kelowna, B.C.
Canada V4V 2K5

Tel: + 1 250 766 9315
Fax: + 1 250 766 9317

HEAD OFFICE

7411 Vantage Way
Delta, B.C.
Canada V4G 1C9

Tel: + 1 604 946 0090
Fax: + 1 604 946 6830

Calgary Branch

235075 Ryan Road S.E.
Calgary, AB
Canada T2P 2G6

Tel: + 1 403 723 0444
Fax: + 1 403 723 0440



International Offices



23325 Cajalco Road
Perris, CA 92570, USA
Tel: +1 951 943 4838
Fax: +1 951 943 4637



Žirovnica 107/A
4274 Žirovnica, Slovenia
Tel: +386 5 99 34 014
Fax: +386 4 58 41 994



Milovana Marinkovića 33
11040 Beograd, Republika Srbija
Tel: + 381 11 31 92 322
Fax: + 381 11 39 80 335

International Locations

Dubai, U.A.E.
Hong Kong, China
Limasol, Cyprus
Taipei, Taiwan R.O.C.

www.national-opazi.si

www.nationalforming.com